

FAKE PROTOCOL WARNING DURING THE PLAY



Protocol for the warning (during the play)

- a) A fake action by the player during the play (no stop)
- b) Show the “Raise-the-lower-arm”-signal to indicate the “fake action”.



FAKE PROTOCOL

WARNING NEXT INTERRUPTION



Protocol for the warning (next stop clock period-game interruption)

- a) Communicate the warning to the affected player and the coach plus co-official(s).
- b) Show the “Raise-the-lower-arm”-signal and demonstrate the “ Technical Foul” signal .



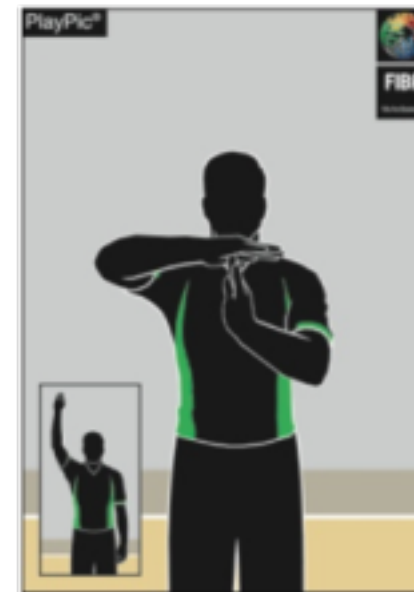
FAKE PROTOCOL REPETITION OR EXCESSIVE



On repetition or on excessive* action resulting in a technical foul

Whistle with

- a) “Stop-the-clock”-signal,
- b) “Raise-the-lower-arm”-signal,
- c) followed by the “Technical foul” signal.



* No contact on the play or excessive action (faking)